



**India Meteorological Department  
(Ministry of Earth Sciences)**

**NATIONAL BULLETIN NO. 15**

**TIME OF ISSUE:1000 HOURS IST**

**DATED: 02.02.2023**

**FROM: INDIA METEOROLOGICAL DEPARTMENT (FAX NO. 24643965/24699216/24623220)**

**TO: CONTROL ROOM, NDM, MINISTRY OF HOME AFFAIRS (FAX.NO. 23093750)**

**CONTROL ROOM NDMA (FAX.NO. 26701729)**

**CABINET SECRETARIAT (FAX.NO.23012284, 23018638)**

**PS TO HON'BLE MINISTER FOR S & T AND EARTH SCIENCES (FAX NO.23316745)**

**SECRETARY, MOES (FAX NO. 24629777)**

**H.Q. (INTEGRATED DEFENCE STAFF AND CDS) (FAX NO. 23005137/23005147)**

**DIRECTOR GENERAL, DOORDARSHAN (23385843)**

**DIRECTOR GENERAL, AIR (23421105, 23421219)**

**PIB MOES (FAX NO. 23389042)**

**UNI (FAX NO. 23355841)**

**D.G. NATIONAL DISASTER RESPONSE FORCE (NDRF) (FAX NO. 26105912, 2436 3260)**

**DIRECTOR, PUNCTUALITY, INDIAN RAILWAYS (FAX NO. 23388503)**

**CHIEF SECRETARY, ANDAMAN & NICOBAR ISLANDS (FAX NO. 03192- 232656)**

**CHIEF SECRETARY, GOVT. OF TAMIL NADU (FAX NO. 044-25672304)**

**CHIEF SECRETARY, GOVT. OF PUDUCHERRY (FAX NO. 0413-2337575, 2334145)**

**CHIEF SECRETARY, GOVT. OF KERALA (FAX NO. 0471-232716)**

**Sub: Depression over Sri Lanka**

The Depression over Southwest Bay of Bengal moved west-southwestwards with a speed of 15 kmph and crossed Sri Lanka coast between Batticaloa and Trincomalee near latitude 7.8°N and longitude 81.6°E during 0330 to 0430 hours IST of today the 2<sup>nd</sup> February, 2023 as a depression with estimated maximum sustained wind speed of 45-55 gusting to 65 kmph. Thereafter, continuing to move west-southwestwards it lay centered at 0530 hours IST of today over Sri Lanka near latitude 7.6°N and longitude 81.4°E, about 30 km southwest of Batticaloa (Sri Lanka), 120 km south-southeast of Trincomalee (Sri Lanka).

It is very likely to continue to move west-southwestwards across south Sri Lanka and emerge into Comorin and adjoining Gulf of Mannar off west coast of Sri Lanka by early morning of tomorrow, the 03<sup>rd</sup> February 2023.

**Forecast track and intensity are given below:**

| <b>Date/Time(IST)</b> | <b>Position<br/>(Lat. °N/ long. °E)</b> | <b>Maximum sustained surface<br/>wind speed (Kmph)</b> | <b>Category of cyclonic<br/>disturbance</b> |
|-----------------------|---|--|---|
| 02.02.23/0530         | 7.6/81.4                                | 45-55 gusting to 65                                    | Depression                                  |
| 02.02.23/1730         | 7.0/80.4                                | 40-50 gusting to 60                                    | Depression                                  |
| 03.02.23/0530         | 6.4/79.4                                | 35-45 gusting to 55                                    | Depression                                  |

## **Warnings:**

### **(i) Rainfall (warning graphics enclosed)**

- ❖ Light/moderate rainfall is very likely at many places over Tamil Nadu & Puducherry and Kerala on 2<sup>nd</sup> February. Isolated **heavy rainfall** is also very likely over south Tamil Nadu and Kerala on 2<sup>nd</sup> February.

### **(ii) Wind warning:**

#### ❖ **Southwest Bay of Bengal:**

- Squally wind with speed reaching 45-55 kmph gusting to 65 kmph on 2<sup>nd</sup> February.

#### ❖ **Along & off Sri Lanka coast:**

- Squally wind with speed reaching 45-55 kmph gusting to 65 kmph on 2<sup>nd</sup> February.

#### ❖ **Gulf of Mannar and Comorin area and along & off south Tamil Nadu & Karaikal coasts:**

- Squally wind speed reaching 40-50 kmph gusting to 60 kmph on 2<sup>nd</sup> February becoming 35-45 kmph gusting to 55 kmph on 3<sup>rd</sup> February.

#### ❖ **Along & off north Tamil Nadu & Puducherry coasts:**

- Strong wind speed reaching 30-40 kmph gusting to 50 kmph on 2<sup>nd</sup> February.

### **(iii) Sea condition**

#### ❖ **Sea condition is likely to be rough to very rough**

- Southwest Bay of Bengal and along & off Sri Lanka coast on 2<sup>nd</sup> February.
- Gulf of Mannar and adjoining Comorin area and along & off south Tamil Nadu coast on 2<sup>nd</sup> and 3<sup>rd</sup> February

#### ❖ **Sea condition is likely to be moderate to rough**

- Along and off north Tamil Nadu & Puducherry coasts on 2<sup>nd</sup> February.

### **(iv) Fishermen Warning (warning graphics enclosed)**

Fishermen are advised not to venture into:

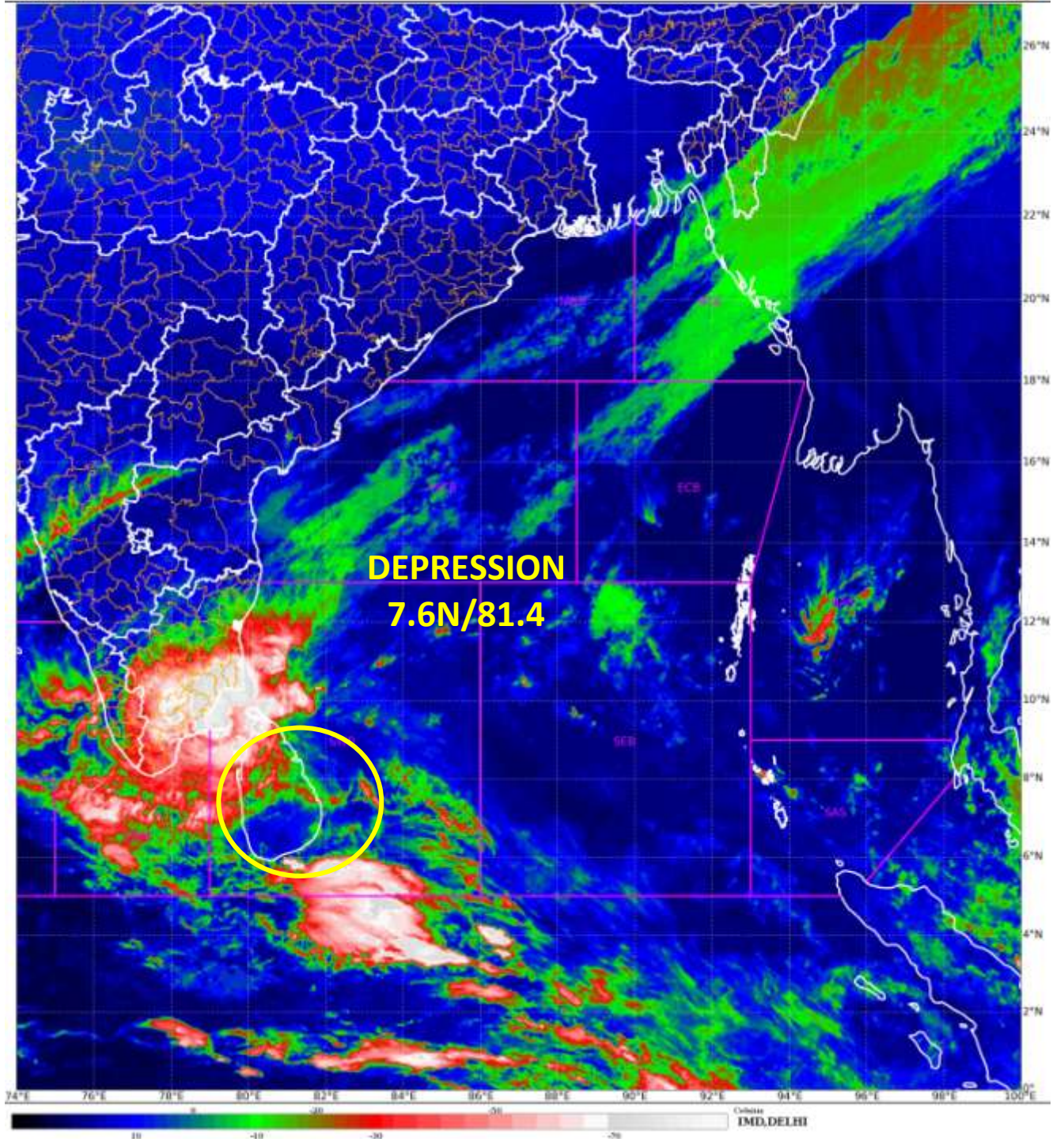
- ❖ Gulf of Mannar, Comorin Area and adjoining Southwest Bay of Bengal and along & off Sri Lanka and south Tamil Nadu & Karaikal coasts on 2<sup>nd</sup> February.

**The system is under continuous surveillance and the next message will be issued at 1130 hours IST of today, the 2<sup>nd</sup> February, 2023.**

**(S. P Singh)**  
**Scientist C, Cyclone Warning Division, New Delhi**

*Copy to: ACWC Kolkata/ ACWC Chennai/ CWC Bhubaneswar/CWC Visakhapatnam/MO Port Blair*

**LEGEND: Heavy Rainfall:** 64.5 to 115.5mm, **Very Heavy Rainfall:** 115.6 to 204.4mm **Most Places:** more than 76% of total stations, **Isolated Places:** Less than 25% of total





**OBSERVED AND FORECAST TRACK OF DEPRESSION OVER SRI LANKA BASED ON 0000 UTC OF 2<sup>ND</sup> FEBRUARY, 2023.**



DATE/TIME IN UTC  
 IST=UTC + 0530  
 L: LOW PRESSURE AREA  
 WML: WELL MARKED LOW PRESSURE AREA  
 D: DEPRESSION (17-27 KT)  
 DD: DEEP DEPRESSION (28-33 KT)  
 CS: CYCLONIC STORM (34-47 KT)  
 SCS: SEVERE CYCLONIC STORM (48-63KT)  
 VSCTS: VERY SEVERE CYCLONIC STORM (64-89 KT)  
 ESCS: EXTREMELY SEVERE CYCLONIC STORM (90-119 KT)  
 SuCS: SUPER CYCLONIC STORM (≥ 120 KT)

- LESS THAN 34 KT
- 34-47 KT
- ≥ 48 KT
- OBSERVED TRACK
- FORECAST TRACK
- CONE OF UNCERTAINTY

# Multi hazard Warning Graphics



## Fishermen warning graphics



Squally WX with wind speed 40-45 kmph gusting to 55 kmph

Squally wind speed 45-55 kmph gusting to 65 kmph

**Fishermen are advised not to venture into the marked areas.**